

TOWARDS 2020



Centenary Logo for Cheshire WIs



Every WI has a Web Presence



ALSAGER
Mercia Link Group

Alsager Community Hall
Green Drive
Alsager
ST7 2EQ
2nd Wednesday of each month at 7.30 pm



BARTHOMLEY
Mercia Link Group

Barthomley Village Hall
CW2 5PT
1st Tuesday at 7.00 pm



HASLINGTON
Mercia Link Group

The Conry Club
1 Fields Rd
Haslington
CW11 5SH
2nd Tuesday of each month at 7.30 pm



HOUGH & DISTRICT
Mercia Link Group

Village Hall
Caldes Lane
Crewe
CW2 5RN
1st Tuesday at 7.30 pm



MIDDLE-WYCHES
Mercia Link Group



SANDBACH
Mercia Link Group

Union Street Community Centre



SANDBACH SUNFLOWERS
Mercia Link Group



WARMINGHAM & DISTRICT
Mercia Link Group

www.cheshirewi.org.uk



NFWI Website - Your WI



Contact us | FAQs | Jobs | WIs A-Z | My WI | Documents | A A A

Donate

- About the WI
- Become a member
- What we do
- Campaigns
- WIE & WI Life
- Media centre
- WI in Wales
- Our shop

Home > Become a member > Structure of the WI > England > Cheshire > Find a WI

Become a member

Membership options

Start a new WI

NFWI Associate Scheme

Structure of the WI

England

The Islands

Wales

WI case studies

Member profiles and blogs

Find a WI

- About us
- Campaigns
- Cheshire Show
- Contact us
- Nearest WIs in Cheshire
- News & Events
- PR & Campaign
- Reports
- Find a WI
- Climate Change

Cheshire WIs A-Z search

A B C D E F G H I J K L M N O P Q R S T U V W X Y Z

Leislowe

Little Bollington

Little Budworth

Little Leigh

Little Stanney

Little Sutton Sapphires

Longendale

Lower Peover

Lower Withington



NFWI news & events

My WI and Digital WI services

Annual Review 2015-2016

Statement on Danman - February 2017

Red-fog events commonplace on labour wards as midwives are pushed to the limit

NFWI response to the Government's gender pay gap regulations

Paris Climate Agreement

NFWI downloads

Speak Up Week of Action

Recent Downloads

www.thewi.org.uk



County Website Information Page

ALSAGER WI - MERCIA GROUP -

Founded in 1990, Alsager WI has around 33 members. Meetings are held on the second Wednesday of the month at the Alsager Community Hall, Green Drive, starting at 7.30 pm. Visitors and new members welcome.

CONTACTING ALSAGER WI

If you would like to know more about Alsager WI and you are interested in becoming a member, or if you would like to come along to a meeting to see what we do, please do get in touch. We are always delighted to greet new members and can assure you of a warm and friendly welcome. You can contact us by email by using our contact form.

ACTIVITIES



Ladies who lunch - play reading group - craft group - outings- Rambling group meet each month date to be arranged.

www.cheshirewi.org.uk



Facebook



<https://www.facebook.com/cheshirefederationwis/>



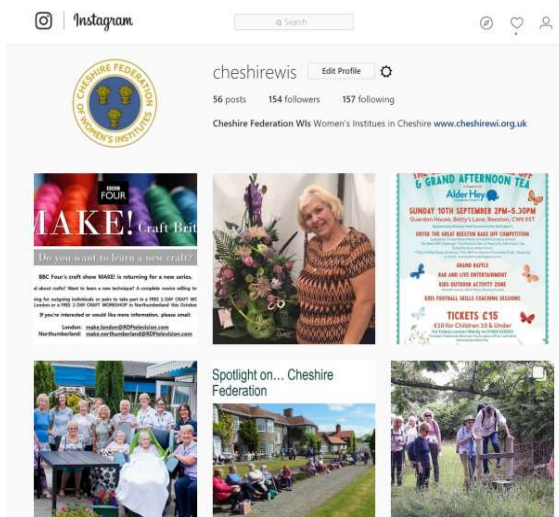
Twitter



<https://twitter.com/CheshireWIs>



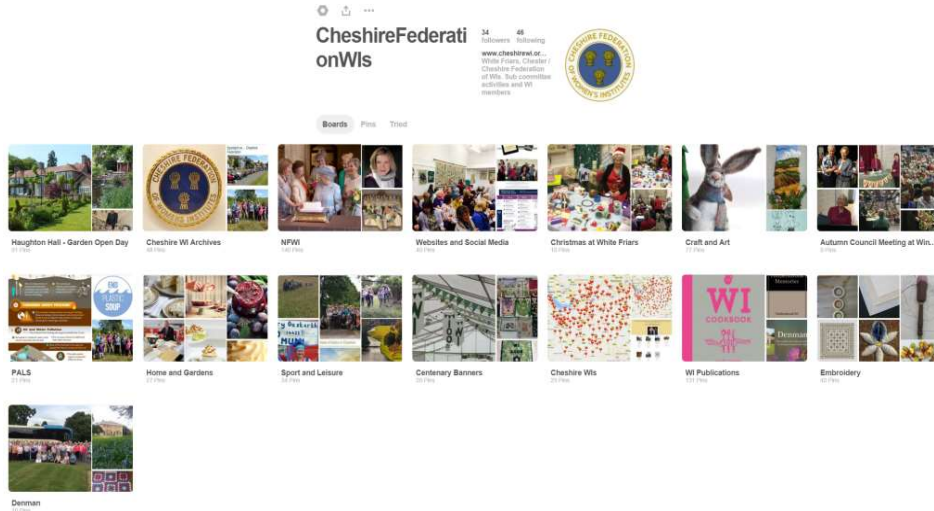
Instagram



<https://www.instagram.com/cheshirewis/>



Pinterest



<https://www.pinterest.co.uk/cheshirefederat/>



Digital Stories



The Wild Indians of Dunham Massey - 95 Years of a Women's Institute

<https://vimeo.com/103258732>

More from Belle Vue Pro
 Autoplay next video



Blog

Behind the door of 104
A look behind the scenes at 104 New Kings Road - the National Federation of Women's Institutes (NFWI) head office

THURSDAY, 24 AUGUST 2017

Link Together: How you can take part in the NFWI's campaign to alleviate loneliness

Our new campaign seeks to inspire WI members to take action on loneliness and share innovative ways of engaging with others who may be lonely.

Link Together
to alleviate loneliness

While it can be hard to tell if someone is experiencing loneliness, there are many ways to let the members of your WI or federation as well as friends, family and people in your community know that you care.

Take time to be kind on World Kindness Day

That's why we're encouraging members to take the time to be kind on World Kindness Day on 13 November. If you're looking for some ideas on how to get involved, why not make a pledge to do something kind for someone else? Could you offer to make someone a cup of tea, pay someone a compliment or even volunteer your time in your local community? Visit the UK's national volunteering database and can help you to find opportunities near you - just type in your post code or town at <https://do-it.org>.

You could also hold a pledge event to highlight how the members of your WI or federation are taking part in World Kindness Day and taking action to support people who may be lonely. Why not decorate your event using our branding template which you can fill in with your pledge of kindness? Simply download the campaign action pack and get crafting!

If you're interested in taking action within your WI or federation, you might like to have a look at our basic guide (below). The WI has a long history of supporting and reaching out to people in the community and so we know that many members will have already embarked on great projects that aim to tackle the issue of loneliness. If this sounds like your WI, let us know what you think of these suggestions and if you have any further ideas on what more WIs and federations could be doing to reach out to members and non-members.

<https://behindthedoorof104.blogspot.co.uk/>



My WI

theWI
INSPIRING WOMEN

f t i e

Home . Log out . Help . A A A

Search

Essential information Running your WI Public Affairs & Campaigns Member Interests Communications & PR Federation information NFWI-Wales

Results for "cheshire"

Showing 1 - 11 of 11 < Previous Next > | Filter by: Category | A - Z Relevance Latest

Cheshire Federation organises 'Meres and Mosses' climate change walk
Date Published: 17.07.2017

Spotlight on... Buckinghamshire Federation
Date Published: 23.08.2017
Cheshire Federation paid tribute to one of its founding members on what would have been her 100th birthday with a garden party, complete with picnic hampers and games, in the stunning Haughton Hall grounds.

NFWI-news-July-2016.pdf
Date Published: 31.08.2017

<https://mywi.thewi.org.uk>



Promotional Banners



Promotional Posters

WI Promotional Materials and Templates



Customisable templates for posters, banners, newsletters and programmes can be found within the 'Your WI' and 'The WI Guide' section on the Moodle.

<https://www.witraining.org.uk/>

